



Argentem Argus and Omneon MediaDeck Breakthrough Value in Automation and Playout

FEATURE LIST

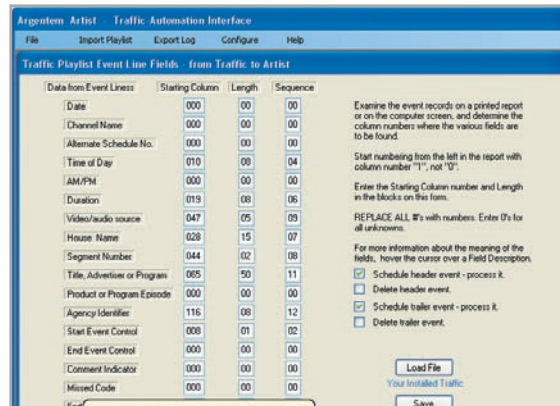
ARGUS

- Direct playlist editing on event grid
- Closed-loop data with traffic systems
- Reliable auto-posting to traffic systems
- Clock time triggers
- Multiple transmission channels per hardware platform
- Automatic timing error detection – supports tuning for unattended operation
- General purpose interfaces; up to 32 GPI-in and 32 GPI-out
- Easy to learn and to use
- High reliability through simplicity
- Personal preference screen colors

MEDIADECK

- Robust, broadcast-proven architecture
- Supports many broadcast formats
- Compact 2RU package
- Cost-effective for single- or two-channel operation

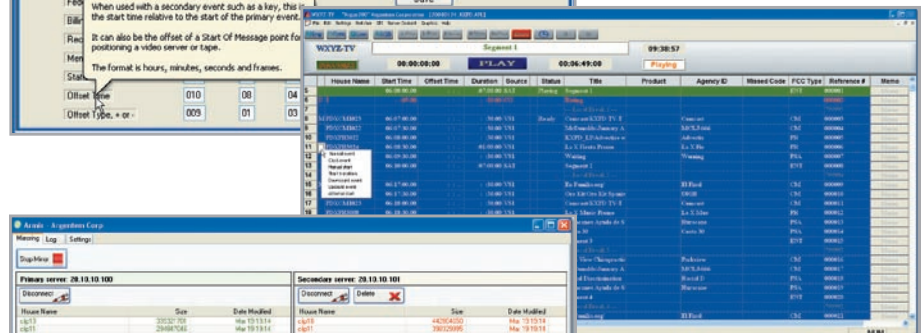
Omneon and Argentem have developed and tested a solution package designed to cost-effectively solve the media ingest, management and playout needs of small stations and facilities. The combination of Argentem Argus controlling the Omneon MediaDeck™ integrated media server brings the robustness of multichannel broadcast playout systems to those who need an easy-to-deploy platform. The MediaDeck is a compact version of the Omneon Spectrum™ media server, combining storage, Gigabit Ethernet connectivity and video I/O modules in one convenient 2RU package. MediaDeck combines mission-critical reliability with support for a complete range of broadcast formats and workflows.



Argentem Artist, Arcord and Armir software
STARTING AT \$2,300

Argentem Argus 100 software
STARTING AT \$2,900

Argentem Argus 200 software
STARTING AT \$8,200



Omneon MediaDeck
STARTING AT UNDER \$36,000

Find More Online
www.omneon.com/solutions



■ PROVEN SOLUTION PACKAGE

Argus is a presentation automation solution matched to the record and play capabilities of the Omneon MediaDeck. The entry-level Argus 100 provides basic playlist editing and MediaDeck control. The Argus 200 also provides secondary events for logos, snipes and other special effects. Both models can be interfaced quickly to any traffic system with the Argentem Artist.

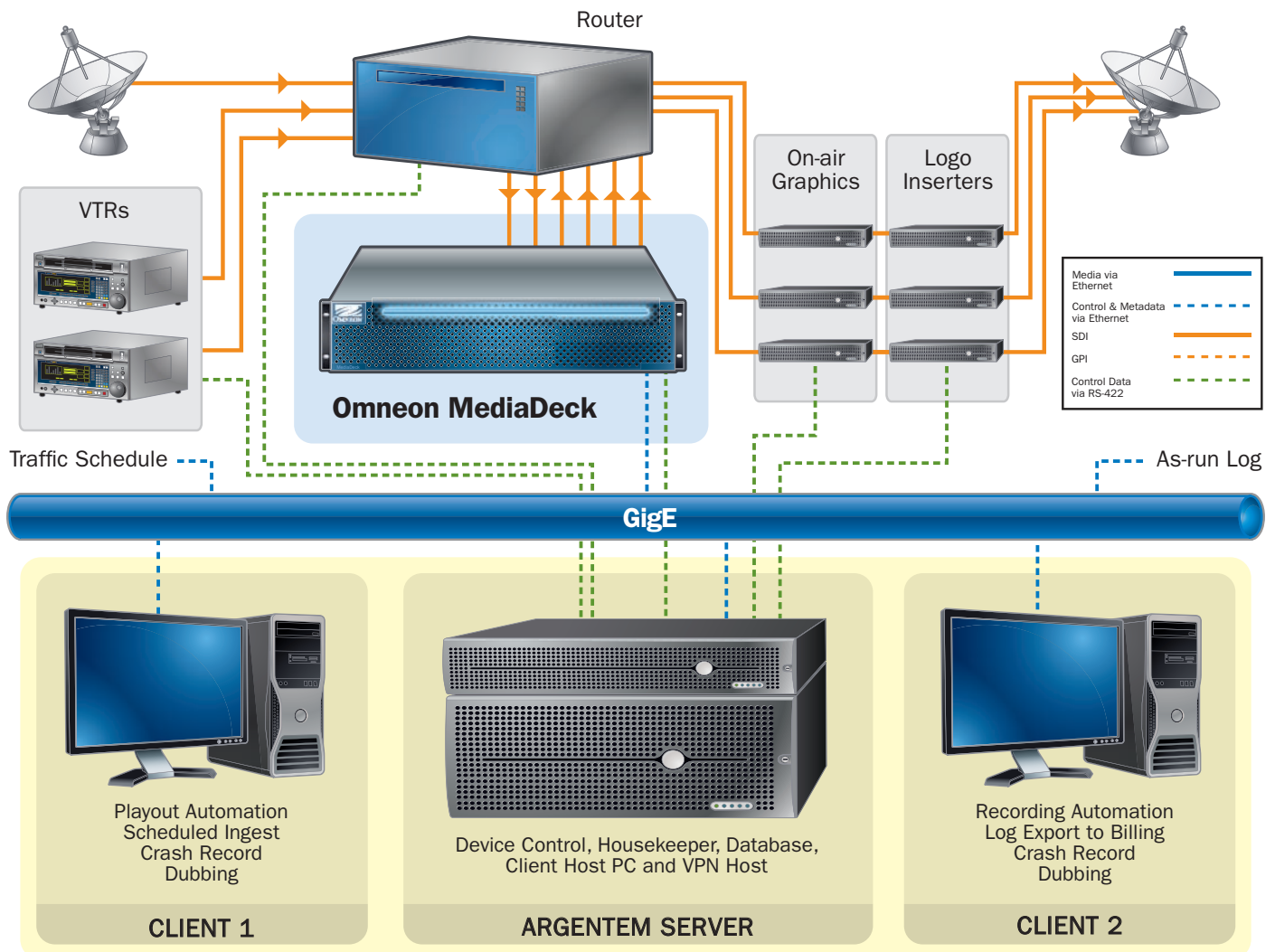
Special features of the Argus systems include the ability to automatically calculate and display timing errors, so that all missing materials are quickly displayed. Exact timing from the MediaDeck SOM and EOM data can override approximate times from the traffic system so that a precise on-air look is obtained. Predicted time calculations help in making the on-air operation capable of running unattended.

The Artist universal traffic/automation interface connects the Argus to almost all traffic systems with no software to be written. The Artist also provides a backup to any automation by generating playlists specific to Omneon video servers.

As an option for the package, the Arcord scheduled recording system uses record lists to schedule unattended recordings and can make overnight recordings without operator attendance. A special archiving feature will make detailed recordings of live news programming and automatically identify the shows for future reference.

Another option, the Armir mirroring system, provides redundancy and backup of server contents, even at remote sites.

A maximum value and return-on-investment are achieved by providing a system that is not only easily installed by the station personnel with only telephone help from Argentem, but also easy to learn to use.



Interfaces

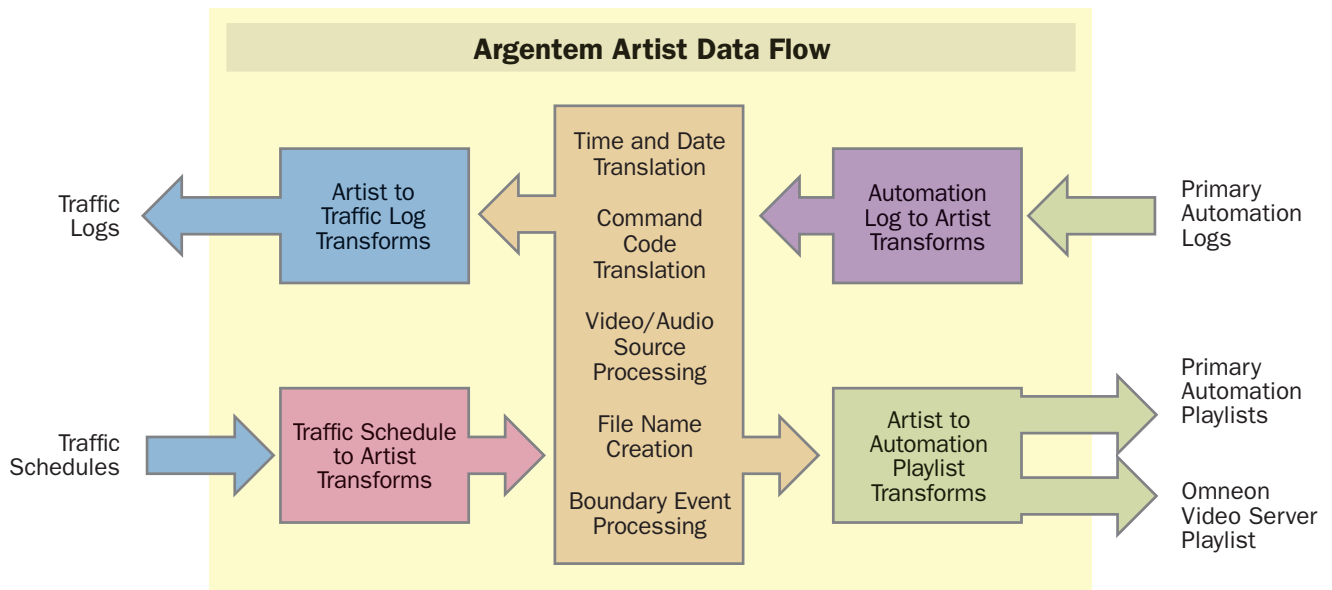
Argus interfaces to a variety of the most popular Harris and Thomson routing switchers, among others. GPI-input and GPI-output adapters accept triggers from networks to perform breaks and to control legacy equipment. Character generators and effects generators are also supported. The Arcord also interfaces to routing switchers. All interfaces to traffic systems are handled by Artist.

Training

The major feature of the Argentem automation solutions is that the systems are so well documented that no on-site training is required. In addition to printed documentation, the software provides numerous conceptual help features, including tool tips that not only provide detailed information, but also in some cases provide calculation results.

Customer Supplied Equipment

Customers have the option of saving money by purchasing Argentem-specified hardware material directly from the manufacturers, or purchasing the same equipment from Argentem. This includes computers as well as cables, RS-422 converters, GPI boxes and other hardware.



This is a representation of the internal workings of the Artist, Argentem's universal interface between any sales/traffic/billing system and any presentation automation system. All interfaces are achieved simply by entering data into data entry forms, and changes can be made by knowledgeable traffic personnel.

Note that the Artist can also prepare a playlist for an Omneon MediaDeck.

■ **PROVEN SOLUTION PACKAGE**

Omneon MediaDeck

STARTING AT UNDER **\$36,000**

PART NUMBER: SMD-2201-BB

- DESCRIPTION:**
- MediaDeck with one SD module and eight 500-GB drives
 - Supports up to three channels of SD video: one bidirectional plus two out
 - Storage is configured with dual-parity RAID to protect against two concurrent disk drive failures

PART NUMBER: SMD-2211-BB

- DESCRIPTION:**
- MediaDeck with two SD modules and eight 500-GB drives
 - Supports up to six channels of SD video: two bidirectional channels plus four out
 - Storage is configured with dual-parity RAID to protect against two concurrent disk drive failures

PART NUMBER: SMD-2202-BB

- DESCRIPTION:**
- MediaDeck with one HD MPEG module and eight 500-GB drives
 - Supports two channels of HD video: one bidirectional plus one out
 - Storage is configured with dual-parity RAID to protect against two concurrent disk drive failures

PART NUMBER: SMD-2222-BB

- DESCRIPTION:**
- MediaDeck with two HD MPEG modules and eight 500-GB drives
 - Supports four channels of HD video: two bidirectional plus two out
 - Storage is configured with dual-parity RAID to protect against two concurrent disk drive failures

Warranty, Support and Upgrades

Omneon Worldwide Service provides customers with a variety of service and support options designed to ensure that its products provide the highest levels of operational reliability and performance. Silver, Gold and Platinum service plans are available and software upgrades are included in both the Gold and Platinum plans. Included with Omneon MediaDeck is the Omneon Enhanced Warranty, which includes the first 12 months of support with advance parts exchange (three business days), 24/7 Technical Assistance Center telephone support and software maintenance releases.

Ordering and Installation

Omneon regional sales managers can be found at www.omneon.com by selecting "How to Buy."

An optional on-site technical support day can be purchased for \$2,500.

For more information

contact sales@omneon.com or visit www.omneon.com

Argentem Argus 100 software

STARTING AT **\$2,900**

Argentem Argus 200 software

STARTING AT **\$8,200**

Argentem Artist, Arcord and Armir software

STARTING AT **\$2,300**

Warranty, Support and Upgrades

Argentem supplies service based on first-contact support, regardless of whether the problem is with software or the Argentem-recommended hardware that the customer purchases directly from the manufacturer or customer's dealer.

Argentem software is warranted against defects in workmanship for a period of 90 days from delivery, wherein defects in workmanship are generally expressed as malfunctions due to improper code writing procedures.

Argentem offers two levels of software support: Premium and Standard. Both are provided under annual contracts and provide regular upgrades as features are added. The Standard is 14% of the software price, and the Premium is 18%, offering eight-hour response time to any unlikely computer bugs. Computer support is supplied by the computer manufacturer, and Argentem stocks other hardware items.

Ordering and Installation

The Argentem Web site, www.argentem.com, has example prices and request forms for both information and quotations.

For more information

contact sales@argentem.com or visit www.argentem.com



www.omneon.com

U.S. Headquarters:

965 Stewart Drive
Sunnyvale, CA 94085
ph +1 866.861.5690
ph +1 408.585.5000
fx +1 408.585.5099

Europe:

5 Lindenwood
Chineham, Basingstoke
RG24 8QY United Kingdom
ph +44 1256.347.400
fx +44 1256.347.410

Japan:

Ginza 3-Chome Bldg. 8F
3-14-1 Ginza, Chuo-ku
Tokyo 104-0061 Japan
ph +81 03.5565.6735
fx +81 03.5565.6736

Asia/Pacific:

20 Loyang Crescent
Singapore 508984
ph +65 6548.0500
fx +65 6548.0504